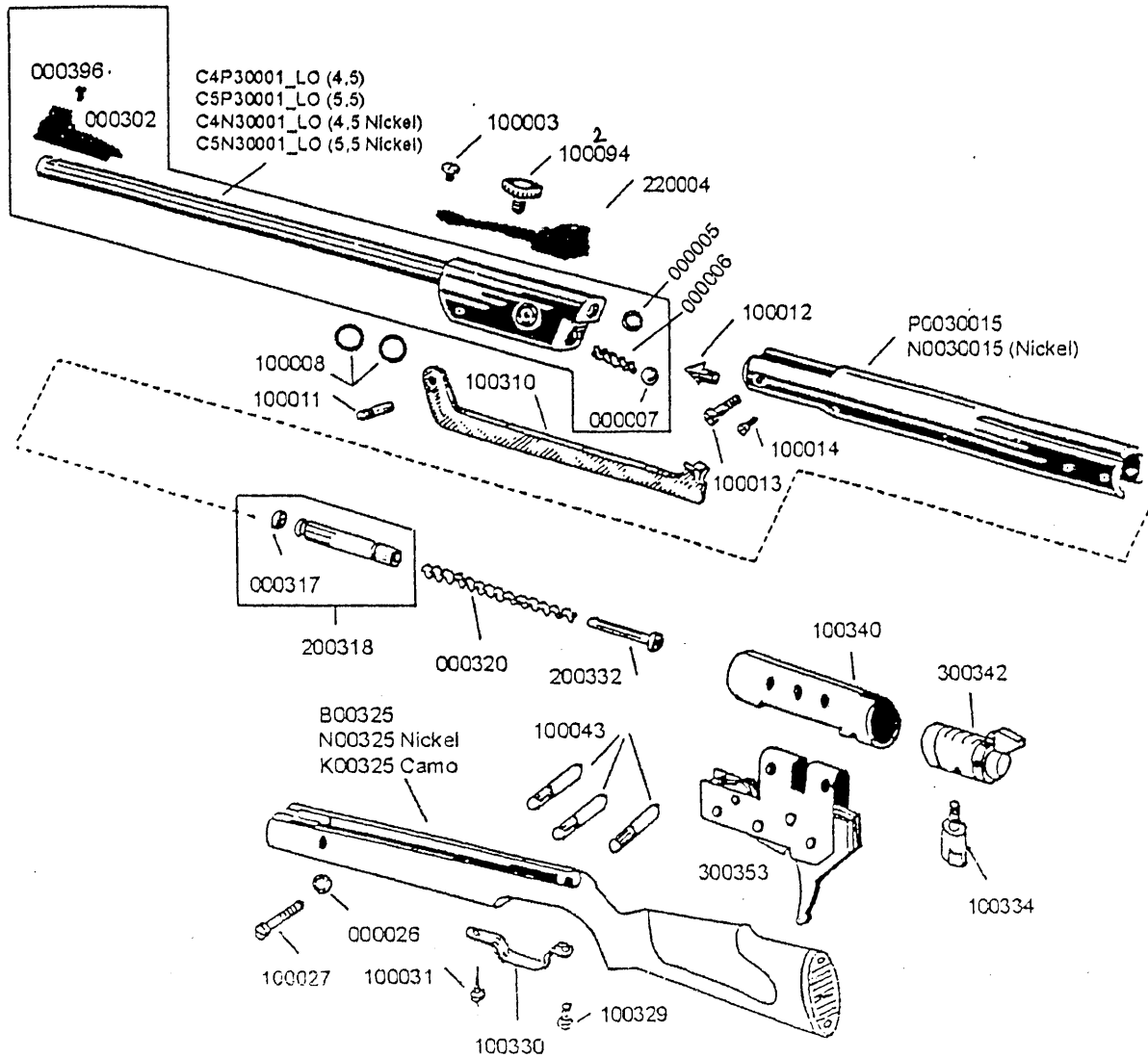


COMETA-300

Cod. (4,5/.177) **C300P45L** **C300N45L** Nickel **C300P45LK** Camo
 Cod. (5,5/.22) **C300P55L** **C300N55L** Nickel **C300P55LK** Camo



| | | | | | |
|---------------|---------------------------|---------------|---------------------------|--------------------|---------------------|
| 000302 | Front sight | 100014 | Set screw | B00325 | Butt stock |
| 000396 | Front sight screw | 300342 | Safety | N00325 | But stock (Nickel) |
| 220004 | Rear sight | 000317 | Piston Seal | K00325 | But stock (Camo) |
| 100003 | Rear sight fixation screw | 200318 | Piston | | |
| 100094 | Rear sight screw vertical | 300353 | Trigger assembly | 000320 | Main spring |
| 000005 | O ring | 100340 | Main spring support | 200332 | Main spring guide |
| 000006 | Compressor spring | 100043 | Support pin 5x30,5 | | |
| 000007 | Compressor ball | 100334 | Main spring support screw | P0030015 | Tube |
| 100008 | Lateral washer | 000026 | Toothed washer | N0030015 | Tube (Nickel) |
| 100310 | Lever | 100027 | Lateral screw | | |
| 100011 | Lever pin | 100329 | Trigger guard front screw | C4P30001_LO | Barrel (4.5) |
| 100012 | Cocking cam | 100330 | Trigger guard | C5P30001_LO | Barrel (5.5) |
| 100013 | Hinge pin screw | 100031 | Trigger guard rear screw | C4N30001_LO | Barrel (4,5 Nickel) |
| | | 100031 | Trigger guard rear screw | C5N30001_LO | Barrel (5,5 Nickel) |